

FRONT VIEW

ANNUNCIATOR ALARM COLOR DESCRIPTION  
 RED = ACTIVE UNACKNOWLEDGED ALARM  
 GREEN = CLEARED UNACKNOWLEDGED ALARM  
 BLACK = ACTIVE ACKNOWLEDGED ALARM

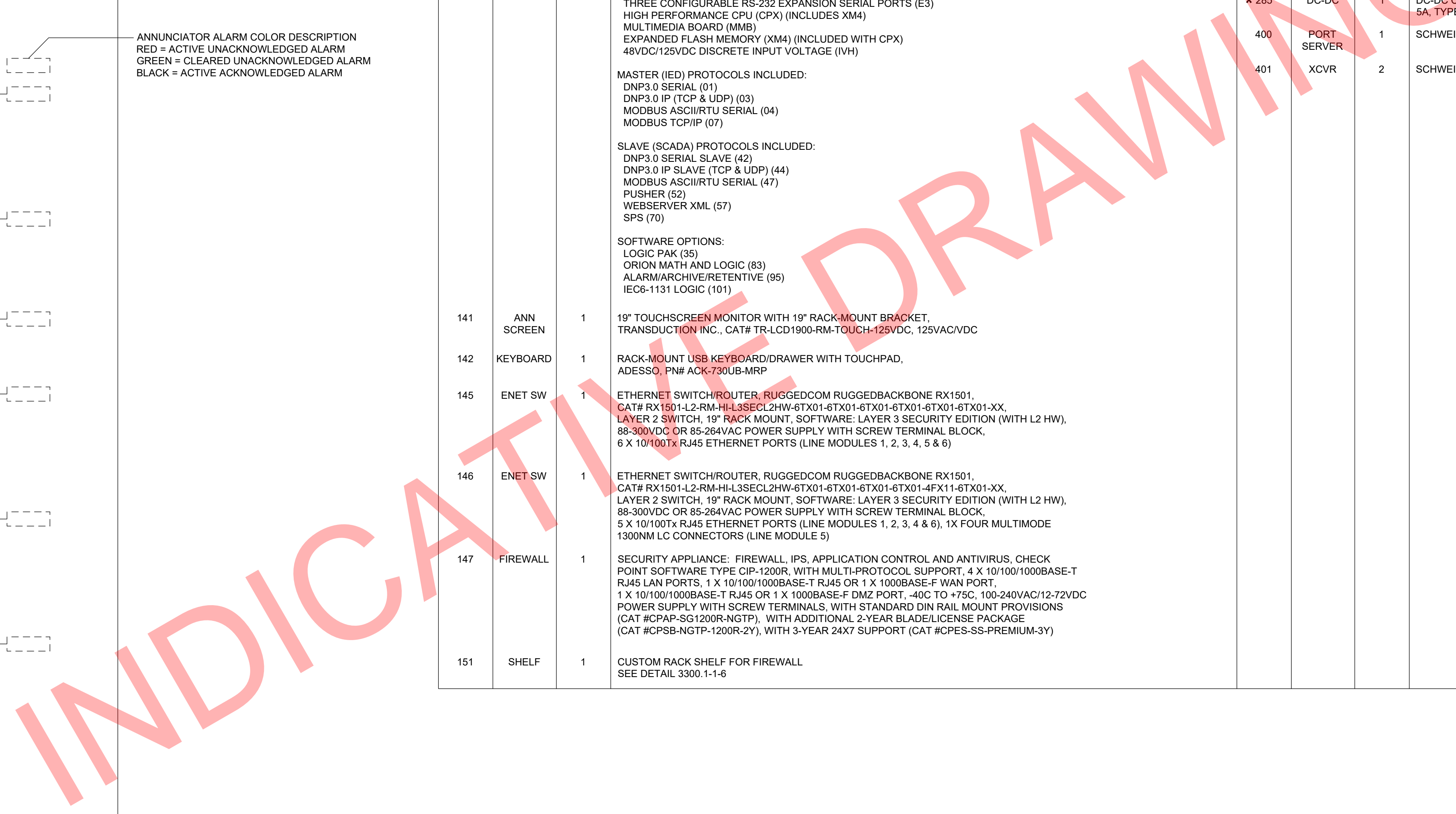
NOTES:

- 1. 1 RACK UNIT SPACE IS REQUIRED ABOVE THE ETHERNET SWITCH AND FIREWALL TO ALLOW FOR HEAT DISSIPATION.

SYMBOLS

- \* REAR MOUNTED EQUIPMENT.
- NAMEPLATES PRODUCED AND MOUNTED
- ▨ PER PANEL NAMEPLATE DETAIL 3300.1-1-11

ITEM	DEV	QUAN	DESCRIPTION	ITEM	DEV	QUAN	DESCRIPTION
2	PANEL	1	90"H X 36"W (PANEL CONST DETAIL 3300.1-1-1)	153	GPS CLOCK	1	GPS SATELLITE-CONTROLLED CLOCK, SCHWEITZER ENGINEERING LABORATORIES INC. MODEL# SEL-2407, CAT# 24070003B, POWER SUPPLY INPUT RANGE: 18-300 VDC AND 85-264 VAC (50-60 HZ), CLOCK WITH 19 INCH RACK MOUNT BRACKET.
61	FT-19R	3	SWITCH BOX, ABB CORP., TYPE FT-19R, 3RU(LO) HEIGHT, SCREW TERMINALS, INCLUDES: POSITION A - 0 CURRENT (BLACK) AND 10 POTENTIAL (BLUE) HANDLE SWITCHES, POSITION B - 0 CURRENT (BLACK) AND 10 POTENTIAL (BLUE) HANDLE SWITCHES, POSITION C - 0 CURRENT (BLACK) AND 10 POTENTIAL (BLUE) HANDLE SWITCHES, FULL BLACK COVER, 8" EXTENDED DEPTH. STYLE #FRXG493493493AX08	* 154	ANT	1	SCHWEITZER ENGINEERING LAB. CAT #9524A, GPS ANTENNA
134	POWER STRIP	1	POWER STRIP, GEIST GLOBAL, MODEL# BRXN080-10, NON-SURGE, 15A.	* 155	CABLE	1	SCHWEITZER ENGINEERING LAB. CAT #C961-075, 75FT GPS ANTENNA CABLE
140	RTU/ANN (MAIN & BACKUP)	1	ORIONLX AUTOMATION PLATFORM, NOVATECH MODEL#ORIONLX-E3-ENEN-CPX-MMB-XM4-IHV-HVXX-01-03-04-07-42-44-47-52-57-70-35-83-95-101	170	PAC	1	SCHWEITZER ENGINEERING LAB. TYPE SEL-2440, CAT #24402H12A1A11630.
			STANDARD HARDWARE AND SOFTWARE COMPONENTS: ONE FIXED DIAGNOSTICS/MAINTENANCE RS-232 PORT (STANDARD) ONE CONFIGURABLE RS-232 PORT (STANDARD) THREE USB MEMORY PORTS DUAL COPPER ETHERNET PORTS (ENEN) SINGLE 48-125VDC/120VAC POWER SUPPLY (HVXX) IRIG-B PORT ETHERNET CLIENT PROTOCOL NTP ETHERNET SERVER PROTOCOLS TELNET, SSH, FTP, SFTP, HTTP, HTTPS, NTP COMPLETE CYBER SECURITY PACKAGE	171	PAC	3	SCHWEITZER ENGINEERING LAB. TYPE SEL-2440, CAT #24402H11A6X11630.
			HARDWARE INCLUDED: THREE CONFIGURABLE RS-232 EXPANSION SERIAL PORTS (E3) HIGH PERFORMANCE CPU (CPX) (INCLUDES XM4) MULTIMEDIA BOARD (MMB) EXPANDED FLASH MEMORY (XM4) (INCLUDED WITH CPX) 48VDC/125VDC DISCRETE INPUT VOLTAGE (IVH)	230	COVER PLATE	7	COVER PLATE 19"W X 1 3/4"H
			MASTER (IED) PROTOCOLS INCLUDED: DNP3.0 SERIAL (01) DNP3.0 IP (TCP & UDP) (03) MODBUS ASCII/RTU SERIAL (04) MODBUS TCP/IP (07)	234	COVER PLATE	1	COVER PLATE 19"W X 8 3/4"H
			SLAVE (SCADA) PROTOCOLS INCLUDED: DNP3.0 SERIAL SLAVE (42) DNP3.0 IP SLAVE (TCP & UDP) (44) MODBUS ASCII/RTU SERIAL (47) PUSHER (52) WEBSERVER XML (57) SPS (70)	* 251	FB	36	FUSE BLOCK, 1 POLE, 250V, 30A, BUSSMAN, #BMM603-1SQ
			SOFTWARE OPTIONS: LOGIC PAK (35) ORION MATH AND LOGIC (83) ALARM/ARCHIVE/RETENTIVE (95) IEC6-1131 LOGIC (101)	* 252	FUSE	24	FUSE, COOPER BUSSMANN, 600V FAST-ACTING SUPPLEMENTAL, 5 AMP, CAT# KLM-5
141	ANN SCREEN	1	19" TOUCHSCREEN MONITOR WITH 19" RACK-MOUNT BRACKET, TRANSDUCTION INC., CAT# TR-LCD1900-RM-TOUCH-125VDC, 125VAC/VDC	* 255	TB	LOT	TERMINAL BLOCK, 12 POINT, MARATHON CO., CAT #1512 STD
142	KEYBOARD	1	RACK-MOUNT USB KEYBOARD/DRAWER WITH TOUCHPAD, ADESSO, PN# ACK-730UB-MRP	* 285	DC-DC	1	DC-DC CONVERTER PHOENIX CONTACT, 90-350VDC INPUT, 24VDC OUTPUT, 5A, TYPE QUINT-PS-100-240AC/24DC/S CAT #2938581
145	ENET SW	1	ETHERNET SWITCH/ROUTER, RUGGEDCOM RUGGEDBACKBONE RX1501, CAT# RX1501-L2-RM-HI-L3SECL2HW-6TX01-6TX01-6TX01-6TX01-6TX01-XX, LAYER 2 SWITCH, 19" RACK MOUNT, SOFTWARE: LAYER 3 SECURITY EDITION (WITH L2 HW), 88-300VDC OR 85-264VAC POWER SUPPLY WITH SCREW TERMINAL BLOCK, 6 X 10/100TX RJ45 ETHERNET PORTS (LINE MODULES 1, 2, 3, 4, 5 & 6)	400	PORT SERVER	1	SCHWEITZER ENGINEERING LAB. TYPE SEL-3610, CAT #3610XHA0XXX0
146	ENET SW	1	ETHERNET SWITCH/ROUTER, RUGGEDCOM RUGGEDBACKBONE RX1501, CAT# RX1501-L2-RM-HI-L3SECL2HW-6TX01-6TX01-6TX01-4FX11-6TX01-XX, LAYER 2 SWITCH, 19" RACK MOUNT, SOFTWARE: LAYER 3 SECURITY EDITION (WITH L2 HW), 88-300VDC OR 85-264VAC POWER SUPPLY WITH SCREW TERMINAL BLOCK, 5 X 10/100TX RJ45 ETHERNET PORTS (LINE MODULES 1, 2, 3, 4 & 6), 1X FOUR MULTIMODE 1300NM LC CONNECTORS (LINE MODULE 5)	401	XCVR	2	SCHWEITZER ENGINEERING LAB. CAT #2812MRX0, MULTI-MODE FIBER OPTIC TRANSCEIVER
147	FIREWALL	1	SECURITY APPLIANCE: FIREWALL, IPS, APPLICATION CONTROL AND ANTIVIRUS, CHECK POINT SOFTWARE TYPE CIP-1200R, WITH MULT-PROTOCOL SUPPORT, 4 X 10/100/1000BASE-T RJ45 LAN PORTS, 1 X 10/100/1000BASE-T RJ45 OR 1 X 1000BASE-F WAN PORT, 1 X 10/100/1000BASE-T RJ45 OR 1 X 1000BASE-F DMZ PORT, -40C TO +75C, 100-240VAC/12-72VDC POWER SUPPLY WITH SCREW TERMINALS, WITH STANDARD DIN RAIL MOUNT PROVISIONS (CAT #CPAP-SG1200R-NGTP), WITH ADDITIONAL 2-YEAR BLADE/LICENSE PACKAGE (CAT #CPSB-NGTP-1200R-2Y), WITH 3-YEAR 24X7 SUPPORT (CAT #CPES-SS-PREMIUM-3Y)				
151	SHELF	1	CUSTOM RACK SHELF FOR FIREWALL SEE DETAIL 3300.1-1-6				



NO	REVISION	ZONE	DATE	BY	CHK	ENG	NO	REVISION	ZONE	DATE	BY	CHK	ENG	REFERENCE DRAWINGS			DWN:	DATE:	CHK:	DATE:	APVD:	DATE:	SCALE: NONE	ENERGY SUPPLY ENGINEERING & CONSTRUCTION	UNIT 0 COLLECTOR SUBSTATION CONTROL 161KV/34.5KV PANEL 2S HMI/RTU/PAC PANEL ELEVATION	NH-XXXXX-X	REV
														DWG NO.	MANUFACTURER	DESCRIPTION											
	REV. A - ISSUED FOR REVIEW: 8-9-21																										

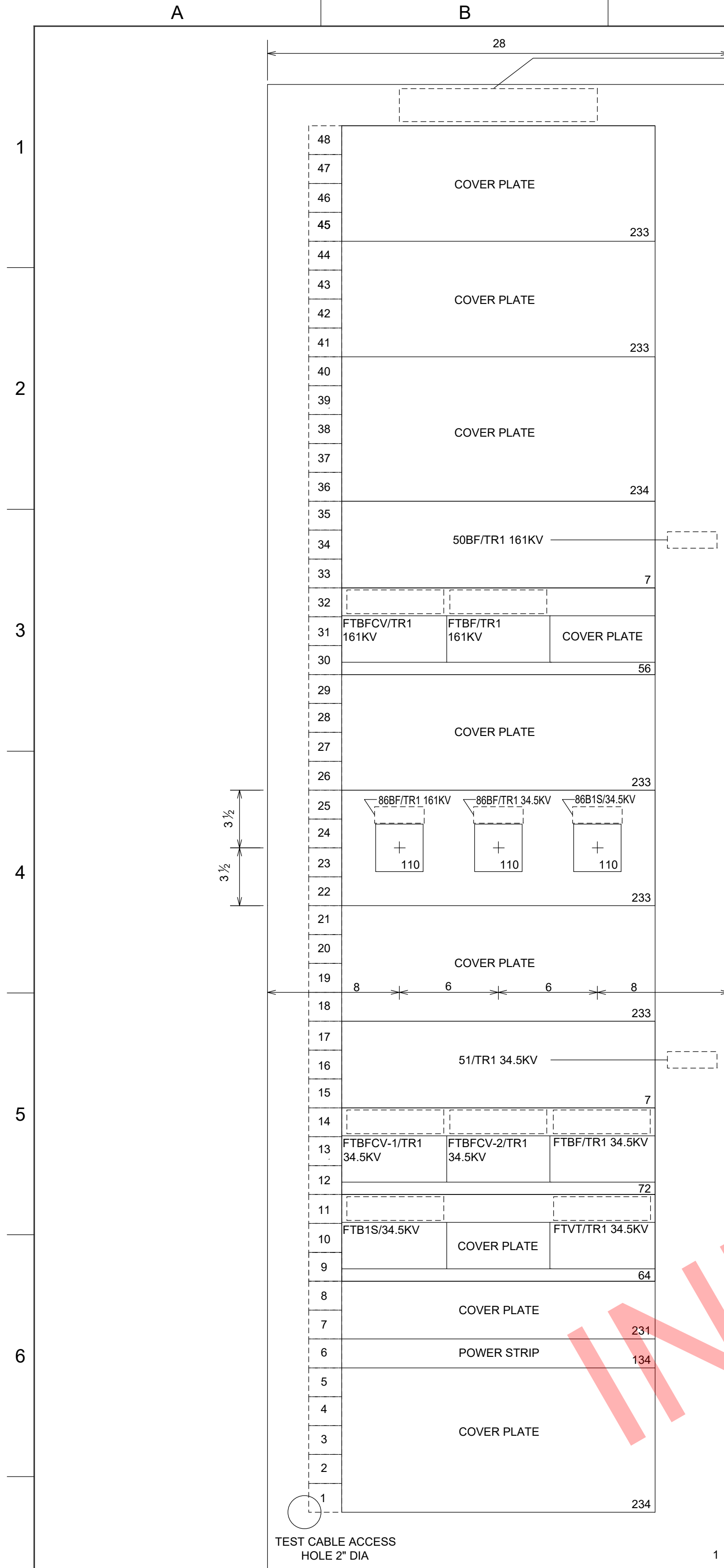


NORTHERN STATES POWER COMPANY  
 XXXXXXX WIND FARM  
 XXXXXXX COUNTY, MINNESOTA

THIS MAP/DRAWING IS A TOOL TO ASSIST EMPLOYEES IN THE PERFORMANCE OF THEIR JOBS. YOUR PERSONAL SAFETY IS PROVIDED FOR BY USING SAFETY PRACTICES, PROCEDURES, AND EQUIPMENT AS DESCRIBED IN THE SAFETY TRAINING PROGRAMS AND MANUALS.

ENERGY SUPPLY ENGINEERING & CONSTRUCTION





SYMBOLS

- \* REAR MOUNTED EQUIPMENT.
- NAMEPLATES FOR DEVICE
- NAMEPLATE DENOTING CIRCUIT CAUTION

ITEM	DEV	QUAN	DESCRIPTION
1	PANEL	1	90"H X 28"W (PANEL CONST DETAIL 3300.1-1)
7	50BF 51	1 1	SCHWEITZER ENG. LAB. TYPE SEL-351S; CAT. #0351S6XHD3J5421
56	FT-19R	1	SWITCH BOX, ABB CORP., TYPE FT-19R, 3RU(LO) HEIGHT, SCREW TERMINALS, INCLUDES: POSITION A - 6 CURRENT (BLACK) AND 4 POTENTIAL (RED) HANDLE SWITCHES, POSITION B - 0 CURRENT (BLACK) AND 10 POTENTIAL (BLUE) HANDLE SWITCHES, POSITION C - COVER PLATE OVER FT-1 CUTOUT, FULL BLACK COVER, 8" EXTENDED DEPTH. STYLE #FRXG137493000AX08
64	FT-19R	1	SWITCH BOX, ABB CORP., TYPE FT-19R, 3RU(LO) HEIGHT, SCREW TERMINALS, INCLUDES: POSITION A - 0 CURRENT (BLACK) AND 10 POTENTIAL (BLUE) HANDLE SWITCHES, POSITION B - COVER PLATE OVER FT-1 CUTOUT, POSITION C - 0 CURRENT (BLACK) AND 10 POTENTIAL (BLUE) HANDLE SWITCHES, FULL BLACK COVER, 8" EXTENDED DEPTH. STYLE #FRXG493000493AX08
72	FT-19R	1	SWITCH BOX, ABB CORP., TYPE FT-19R, 3RU(LO) HEIGHT, SCREW TERMINALS, INCLUDES: POSITION A - 6 CURRENT (BLACK) AND 4 POTENTIAL (RED) HANDLE SWITCHES, POSITION B - 6 CURRENT (BLACK) AND 4 POTENTIAL (RED) HANDLE SWITCHES, POSITION C - 0 CURRENT (BLACK) AND 10 POTENTIAL (BLUE) HANDLE SWITCHES, FULL BLACK COVER, 8" EXTENDED DEPTH. STYLE #FRXG137137493AX08
110	86BF 86B1S	2 1	LOCKOUT RELAY, ELECTROSWITCH, SERIES 24 LOR, CAT# 7810D, 125VDC "D" COIL, 10 DECK, 20 N.O. & 20 N.C. CONTACTS, TITLE "LOCK-OUT RELAY", ENGRAVING CODE: 17C-2L22 OVAL-SHANK HANDLE
134	POWER STRIP	1	POWER STRIP, GEIST GLOBAL, MODEL# BRXN080-10, NON-SURGE, 15A

ITEM	DEV	QUAN	DESCRIPTION
231	COVER PLATE	1	COVER PLATE 19"W X 3 1/2"H
233	COVER PLATE	5	COVER PLATE 19"W X 7"H
234	COVER PLATE	2	COVER PLATE 19"W X 8 3/4"H
*251	FB	10	FUSE BLOCK, 1 POLE, 600V, 30A, BUSSMAN, #BMM603-1SQ
*252	FUSE	6	FUSE, COOPER BUSSMANN, 600V FAST-ACTING SUPPLEMENTAL, 5 AMP, CAT# KLM-5
*253	TB	LOT	TERMINAL BLOCK, 4 POINT, MARATHON CO., CAT #1504SC
*255	TB	LOT	TERMINAL BLOCK, 12 POINT, MARATHON CO., CAT #1512 STD

INDICATIVE DRAWING

NO	REVISION	ZONE	DATE	BY	CHK	ENG	NO
	REV. A - ISSUED FOR REVIEW: 8-9-21						

REVISION	ZONE	DATE	BY	CHK	ENG

REFERENCE DRAWINGS		
DWG NO.	MANUFACTURER	DESCRIPTION

**XcelEnergy**  
NORTHERN STATES POWER COMPANY  
XXXXXXX WIND FARM  
XXXXXXX COUNTY, MINNESOTA

DWN: DATE: CHK: DATE:  
ENG: DATE: CHK: DATE:  
PM: DATE: PROJ. NO:  
APVD: DATE: SCALE: NONE

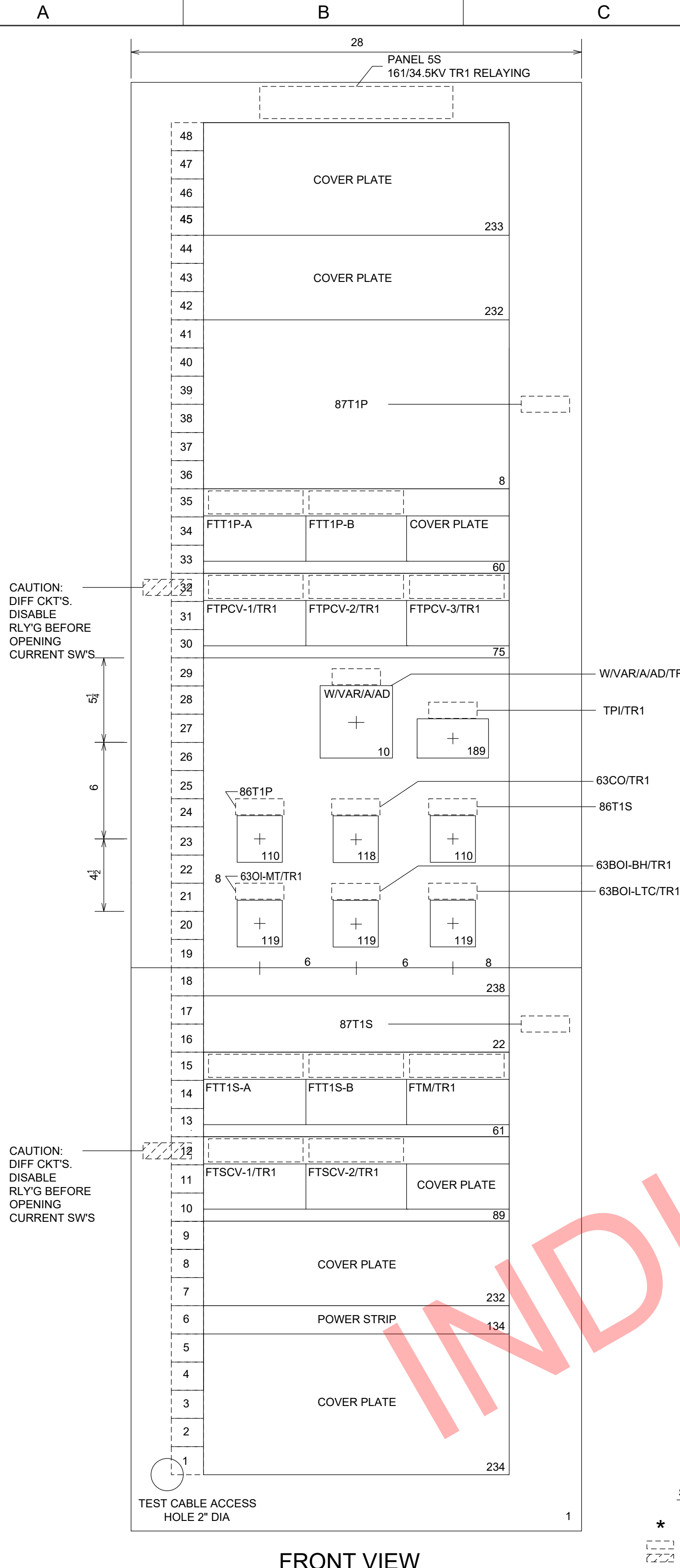
THIS MAP/DRAWING IS A TOOL TO ASSIST EMPLOYEES IN THE PERFORMANCE OF THEIR JOBS. YOUR PERSONAL SAFETY IS PROVIDED FOR BY USING SAFETY PRACTICES, PROCEDURES, AND EQUIPMENT AS DESCRIBED IN THE SAFETY TRAINING PROGRAMS AND MANUALS.

ENERGY SUPPLY  
ENGINEERING & CONSTRUCTION

UNIT 0  
COLLECTOR SUBSTATION CONTROL  
161KV/34.5KV PANEL 4S  
BKR TR1 161KV & TR1 34.5KV CONTROL  
PANEL ELEVATION

NH-XXXXX-X

1  
2  
3  
4  
5  
6  
7



FRONT VIEW

SYMBOLS

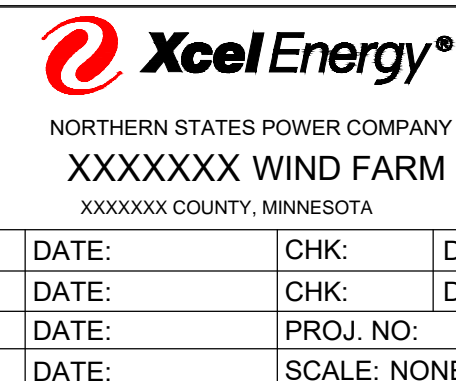
\* REAR MOUNTED EQUIPMENT.

NAMEPLATES FOR DEVICE

NAMEPLATE DENOTING CIRCUIT CAUTION

ITEM	DEV	QUAN	DESCRIPTION	ITEM	DEV	QUAN	DESCRIPTION
1	PANEL	1	90"H X 28"W (PANEL CONST DETAIL 3300.1-1)	232	COVER PLATE	2	COVER PLATE 19"W X 5 3/4"H
8	87T1P	1	SCHWEITZER ENG. LAB. TYPE SEL-487E; CAT. #0487E3X411XXB0X4H624XXX	233	COVER PLATE	1	COVER PLATE 19"W X 7"H
10	WVAR/A/AD	1	MULTIFUNCTION AMP/DEMAND AMP/VOLT/WATT/VAR METER, BITRONICS TYPE M650, CAT# M650B3U511, 2, 2 1/2 OR 3-ELEMENT 0-5A AND 0-120VAC NOM. INPUT, UNIVERSAL PWR SUPPLY 55-240VAC/48-250VDC, THREE 5-DIGIT RED LED DISPLAYS, 4.5" SQUARE FACEPLATE, 6.5" DEEP BY 4" ROUND CASE, PORT 1: CONFIGURABLE RS-232/485 SERIAL, PORT 2: 10/100BASE-TX ETHERNET WITH MODBUS OR DNP3 OVER TCP/IP PROTOCOLS, VOLTAGE TO BE DISPLAYED IN PHASE TO PHASE PRIMARY UNITS.	234	COVER PLATE	1	COVER PLATE 19"W X 8 3/4"H
22	87T1S	1	SCHWEITZER ENG. LAB. TYPE SEL-387A; CAT. #0387A010HX4X341	238	COVER PLATE	1	COVER PLATE 19"W X 15 3/4"H
60	FT-19R	1	SWITCH BOX, ABB CORP., TYPE FT-19R, 3RU(LO) HEIGHT, SCREW TERMINALS, INCLUDES: POSITION A - 0 CURRENT (BLACK) AND 10 POTENTIAL (BLUE) HANDLE SWITCHES, POSITION B - 0 CURRENT (BLACK) AND 10 POTENTIAL (BLUE) HANDLE SWITCHES, POSITION C - COVER PLATE OVER FT-1 CUTOUT, FULL BLACK COVER, 8" EXTENDED DEPTH. STYLE #FRXG493493000AX08	*251	FB	11	FUSE BLOCK, 1 POLE, 600V, 30A, BUSSMAN, #BMM603-1SQ
61	FT-19R	1	SWITCH BOX, ABB CORP., TYPE FT-19R, 3RU(LO) HEIGHT, SCREW TERMINALS, INCLUDES: POSITION A - 0 CURRENT (BLACK) AND 10 POTENTIAL (BLUE) HANDLE SWITCHES, POSITION B - 0 CURRENT (BLACK) AND 10 POTENTIAL (BLUE) HANDLE SWITCHES, POSITION C - 6 CURRENT (BLACK) AND 4 POTENTIAL (RED) HANDLE SWITCHES, FULL BLACK COVER, 8" EXTENDED DEPTH. STYLE #FRXG493493137AX08	*252	FUSE	8	FUSE, COOPER BUSSMANN, 600V FAST-ACTING SUPPLEMENTAL, 5 AMP, CAT# KLM-5
75	FT-19R	1	SWITCH BOX, ABB CORP., TYPE FT-19R, 3RU(LO) HEIGHT, SCREW TERMINALS, INCLUDES: POSITION A - 8 CURRENT (BLACK) AND 2 POTENTIAL (RED) HANDLE SWITCHES, POSITION B - 8 CURRENT (BLACK) AND 2 POTENTIAL (RED) HANDLE SWITCHES, POSITION C - 8 CURRENT (BLACK) AND 4 POTENTIAL (RED) HANDLE SWITCHES, FULL BLACK COVER, 8" EXTENDED DEPTH. STYLE #FRXG084084137AX08	*253	TB	LOT	TERMINAL BLOCK, 4 POINT, MARATHON CO., CAT #1504SC
89	FT-19R	1	SWITCH BOX, ABB CORP., TYPE FT-19R, 3RU(LO) HEIGHT, SCREW TERMINALS, INCLUDES: POSITION A - 8 CURRENT (BLACK) AND 2 POTENTIAL (RED) HANDLE SWITCHES, POSITION B - 8 CURRENT (BLACK) AND 2 POTENTIAL (RED) HANDLE SWITCHES, POSITION C - COVER PLATE OVER FT-1 CUTOUT, FULL BLACK COVER, 8" EXTENDED DEPTH. STYLE #FRXG084084000AX08	*255	TB	LOT	TERMINAL BLOCK, 12 POINT, MARATHON CO., CAT #1512 STD
110	86T	2	LOCKOUT RELAY, ELECTROSWITCH, SERIES 24 LOR, CAT# 7810D, 125VDC "D" COIL, 10 DECK 20 N.O. & 20 N.C. CONTACTS, TITLE "LOCK-OUT RELAY", ENGRAVING CODE: 17C-2L22, OVAL-SHANK HANDLE				
118	63-CO	1	OFF-ON SWITCH, ELECTROSWITCH SERIES 24, CAT#24901D, DETENT ACTION ROTARY SWITCH, 2 POSITION, 1 DECK, 4 DOUBLE CONTACTS PER DECK, "NORMAL" AT 12:00, "OFF" AT 1:30, TITLE "CUT-OFF", ENGRAVING CODE:010D-2C16EZ, PISTOL GRIP HANDLE				
119	63OI	3	ANNUNCIATOR TARGET RELAY, ELECTROSWITCH ATR CAT#686-110A, WITHOUT SEAL IN OF AUXILIARY CONTACTS				
134	POWER STRIP	1	POWER STRIP, GEIST GLOBAL, MODEL# BRXN080-10, NON-SURGE, 15A				
189	TPI/TR1	1	INTELLIGENT CONTROL INC., PROGRAMMABLE TAP POSITION MONITOR, M#1250B-1-1 110VAC UNIT, -1 TO +1 MA ANALOG OUTPUT, LED DISPLAY, ISOLATED INPUT CARD, SEMI-FLUSH MOUNT, COMPATIBLE TO RECIEVE INPUT FROM SELSYN TRANSMITTER.				

NO	REVISION	ZONE	DATE	BY	CHK	ENG	NO	REVISION	ZONE	DATE	BY	CHK	ENG	REFERENCE DRAWINGS			DWN:	DATE:	CHK:	DATE:	PM:	DATE:	PROJ. NO:	APVD:	DATE:	SCALE: NONE	ENERGY SUPPLY ENGINEERING & CONSTRUCTION	UNIT 0 COLLECTOR SUBSTATION CONTROL 161KV/34.5KV PANEL 5S TR1 PRI AND SEC PROTECTION PANEL ELEVATION	NH-XXXXX-X	REV
														DWG NO.	MANUFACTURER	DESCRIPTION														
	REV. A - ISSUED FOR REVIEW: 8-9-21																													

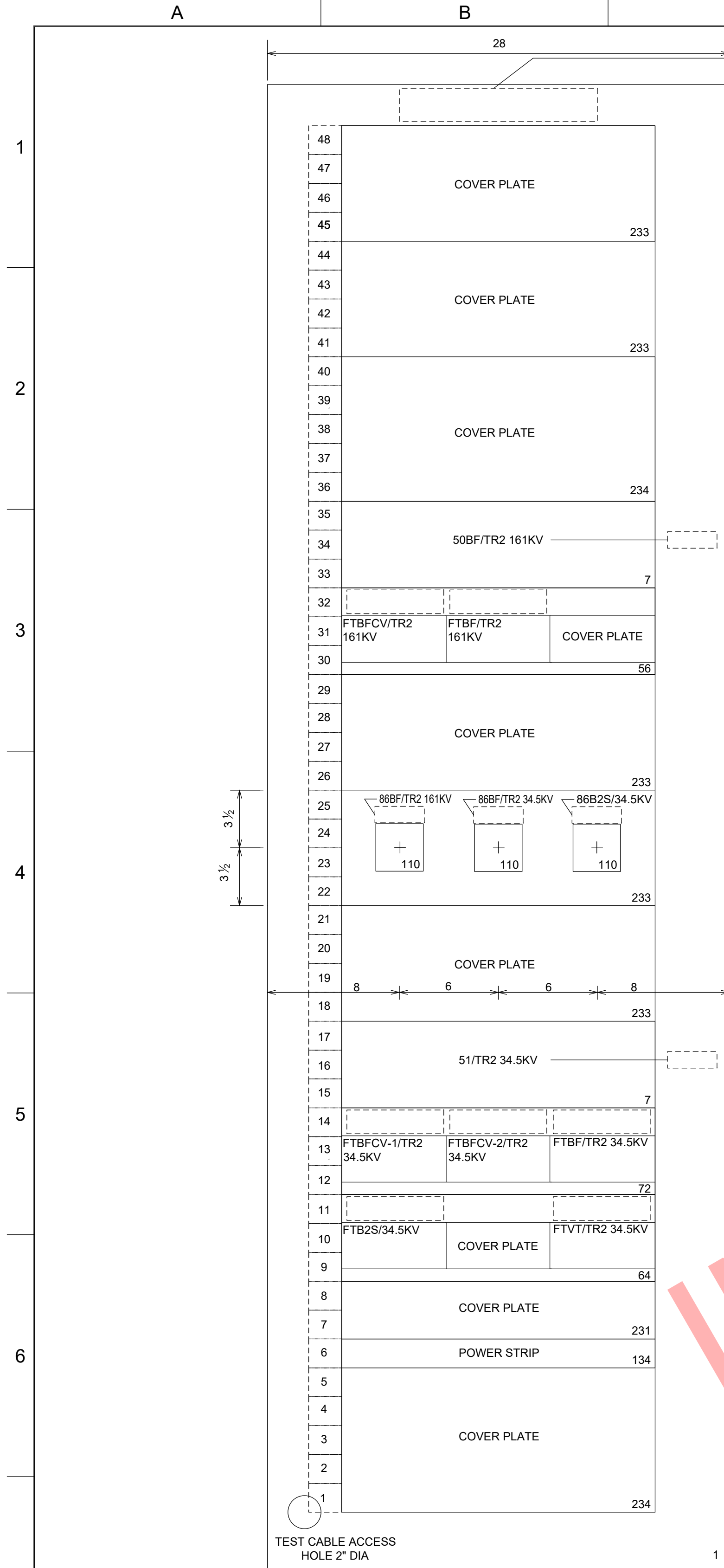


THIS MAP/DOCUMENT IS A TOOL TO ASSIST EMPLOYEES IN THE PERFORMANCE OF THEIR JOBS. YOUR PERSONAL SAFETY IS PROVIDED FOR BY USING SAFETY PRACTICES, PROCEDURES, AND EQUIPMENT AS DESCRIBED IN THE SAFETY TRAINING PROGRAMS AND MANUALS.

UNIT 0  
COLLECTOR SUBSTATION CONTROL  
161KV/34.5KV PANEL 5S  
TR1 PRI AND SEC PROTECTION  
PANEL ELEVATION

ENERGY SUPPLY  
ENGINEERING & CONSTRUCTION

NH-XXXXX-X



PANEL 6S  
BREAKERS TR2 161KV &  
TR2 34.5KV CONTROL  
& BUS 2 SECONDARY  
RELAYING

- SYMBOLS
- \* REAR MOUNTED EQUIPMENT.
  - NAMEPLATES FOR DEVICE
  - NAMEPLATE DENOTING CIRCUIT CAUTION

ITEM	DEV	QUAN	DESCRIPTION	ITEM	DEV	QUAN	DESCRIPTION
1	PANEL	1	90"H X 28"W (PANEL CONST DETAIL 3300.1-1)	231	COVER PLATE	1	COVER PLATE 19"W X 3 1/2"
7	50BF 51	1 1	SCHWEITZER ENG. LAB. TYPE SEL-351S; CAT. #0351S6XHD3J5421	233	COVER PLATE	5	COVER PLATE 19"W X 7"H
56	FT-19R	1	SWITCH BOX, ABB CORP., TYPE FT-19R, 3RU(LO) HEIGHT, SCREW TERMINALS, INCLUDES: POSITION A - 6 CURRENT (BLACK) AND 4 POTENTIAL (RED) HANDLE SWITCHES, POSITION B - 0 CURRENT (BLACK) AND 10 POTENTIAL (BLUE) HANDLE SWITCHES, POSITION C - COVER PLATE OVER FT-1 CUTOUT, FULL BLACK COVER, 8" EXTENDED DEPTH. STYLE #FRXG137493000AX08	234	COVER PLATE	2	COVER PLATE 19"W X 8 3/4"H
64	FT-19R	1	SWITCH BOX, ABB CORP., TYPE FT-19R, 3RU(LO) HEIGHT, SCREW TERMINALS, INCLUDES: POSITION A - 0 CURRENT (BLACK) AND 10 POTENTIAL (BLUE) HANDLE SWITCHES, POSITION B - COVER PLATE OVER FT-1 CUTOUT, POSITION C - 0 CURRENT (BLACK) AND 10 POTENTIAL (BLUE) HANDLE SWITCHES, FULL BLACK COVER, 8" EXTENDED DEPTH. STYLE #FRXG137493000AX08	* 251	FB	10	FUSE BLOCK, 1 POLE, 600V, 30A, BUSSMAN, #BMM603-1SQ
72	FT-19R	1	SWITCH BOX, ABB CORP., TYPE FT-19R, 3RU(LO) HEIGHT, SCREW TERMINALS, INCLUDES: POSITION A - 6 CURRENT (BLACK) AND 4 POTENTIAL (RED) HANDLE SWITCHES, POSITION B - 6 CURRENT (BLACK) AND 4 POTENTIAL (RED) HANDLE SWITCHES, POSITION C - 0 CURRENT (BLACK) AND 10 POTENTIAL (BLUE) HANDLE SWITCHES, FULL BLACK COVER, 8" EXTENDED DEPTH. STYLE #FRXG137493000AX08	* 252	FUSE	6	FUSE, COOPER BUSSMANN, 600V FAST-ACTING SUPPLEMENTAL, 5 AMP, CAT# KLM-5
110	86BF 86B2S	2 1	LOCKOUT RELAY, ELECTROSWITCH, SERIES 24 LOR, CAT# 7810D, 125VDC "D" COIL, 10 DECK 20 N.O. & 20 N.C. CONTACTS, TITLE "LOCK-OUT RELAY", ENGRAVING CODE: 17C-2L22 OVAL-SHANK HANDLE	* 253	TB	LOT	TERMINAL BLOCK, 4 POINT, MARATHON CO., CAT #1504SC
134	POWER STRIP	1	POWER STRIP, GEIST GLOBAL, MODEL# BRXN080-10, NON-SURGE, 15A	* 255	TB	LOT	TERMINAL BLOCK, 12 POINT, MARATHON CO., CAT #1512 STD

INDICATIVE DRAWING

NO	REVISION	ZONE	DATE	BY	CHK	ENG	NO
	REV. A - ISSUED FOR REVIEW: 8-9-21						

REVISION	ZONE	DATE	BY	CHK	ENG

REFERENCE DRAWINGS		
DWG NO.	MANUFACTURER	DESCRIPTION

**Xcel Energy**  
NORTHERN STATES POWER COMPANY  
XXXXXXX WIND FARM  
XXXXXX COUNTY, MINNESOTA

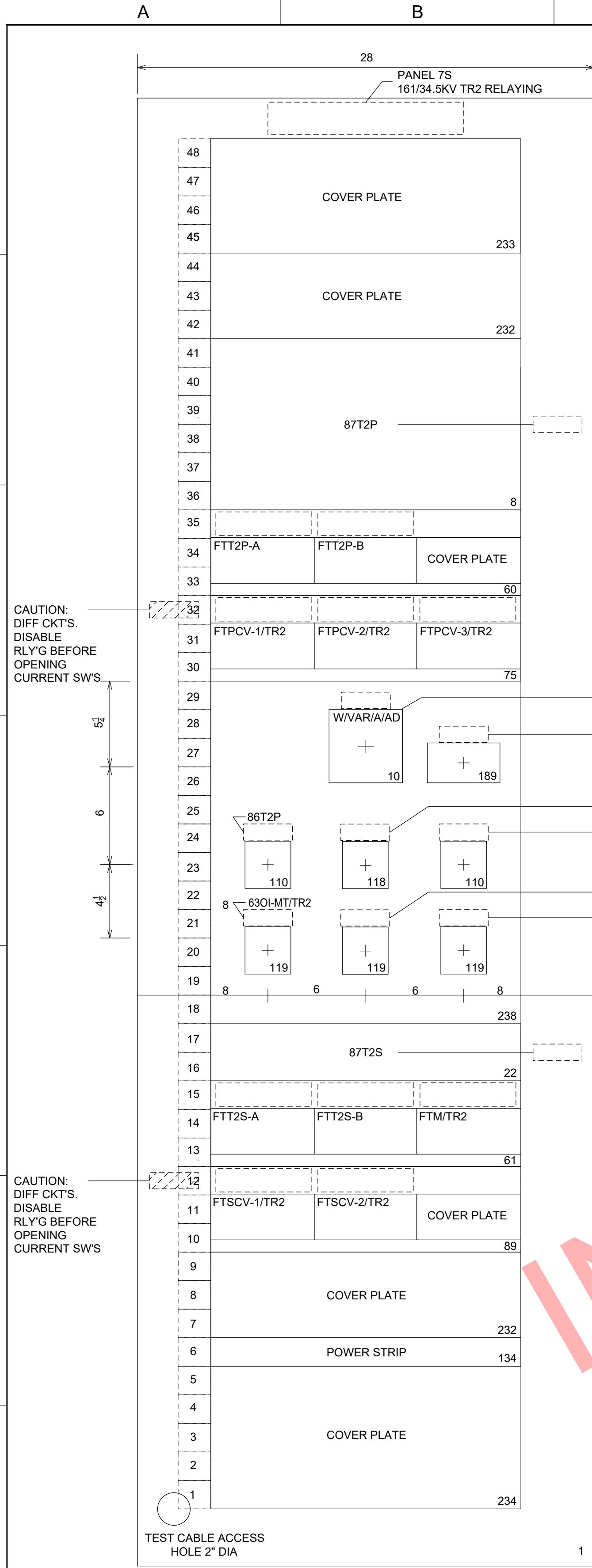
DWN: \_\_\_\_\_ DATE: \_\_\_\_\_ CHK: \_\_\_\_\_ DATE: \_\_\_\_\_  
 ENG: \_\_\_\_\_ DATE: \_\_\_\_\_ CHK: \_\_\_\_\_ DATE: \_\_\_\_\_  
 PM: \_\_\_\_\_ DATE: \_\_\_\_\_ PROJ. NO: \_\_\_\_\_  
 APVD: \_\_\_\_\_ DATE: \_\_\_\_\_ SCALE: NONE

THIS MAP/DRAWING IS A TOOL TO ASSIST EMPLOYEES IN THE PERFORMANCE OF THEIR JOBS. YOUR PERSONAL SAFETY IS PROVIDED FOR BY USING SAFETY PRACTICES, PROCEDURES, AND EQUIPMENT AS DESCRIBED IN THE SAFETY TRAINING PROGRAMS AND MANUALS.

ENERGY SUPPLY  
ENGINEERING & CONSTRUCTION

UNIT 0  
COLLECTOR SUBSTATION CONTROL  
161KV/34.5KV PANEL 6S  
BKR TR2 161KV & TR2 34.5KV CONTROL  
PANEL ELEVATION

NH-XXXXX-X



SYMBOLS

- ★ REAR MOUNTED EQUIPMENT.
- NAMEPLATES FOR DEVICE
- NAMEPLATE DENOTING CIRCUIT CAUTION

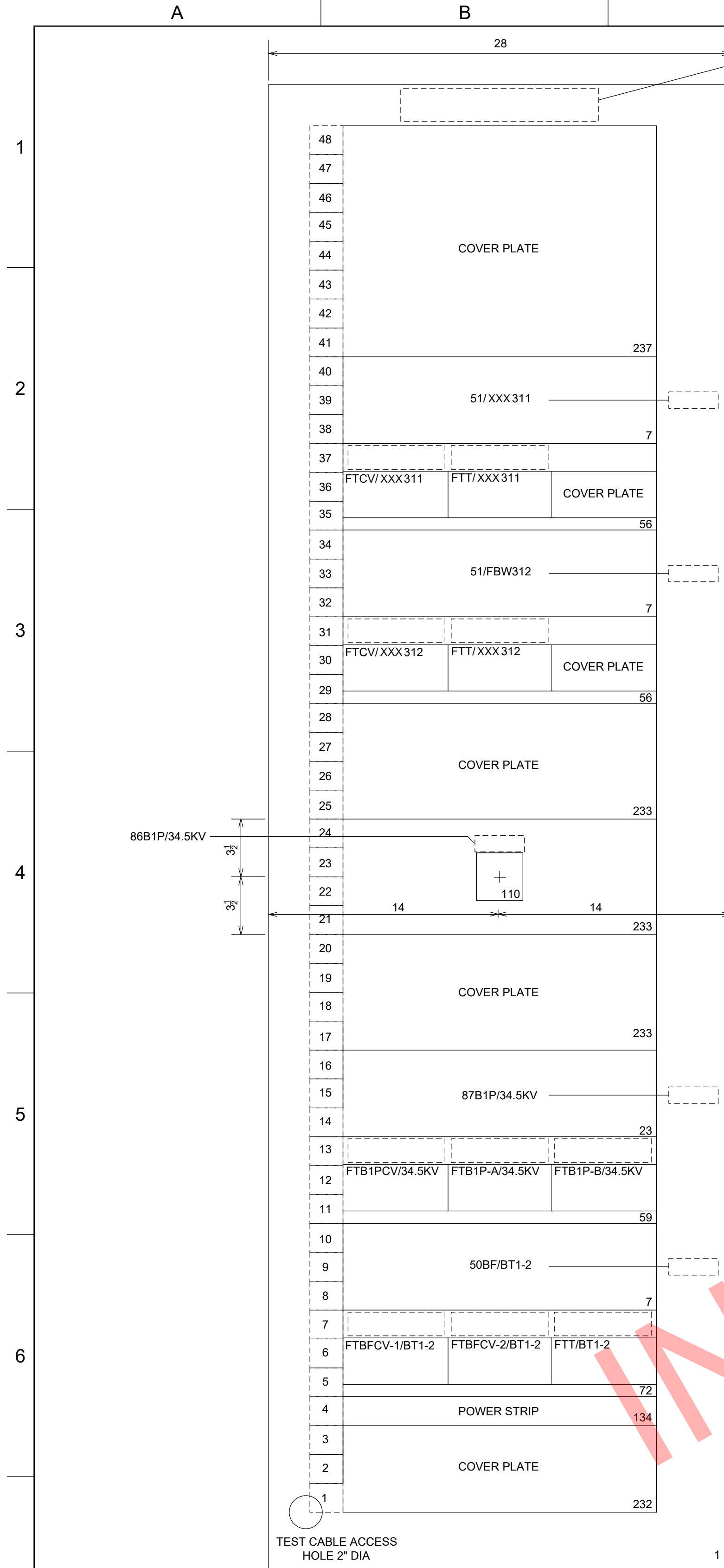
ITEM	DEV	QUAN	DESCRIPTION	ITEM	DEV	QUAN	DESCRIPTION
1	PANEL	1	90"H X 28"W (PANEL CONST DETAIL 3300.1-1)	232	COVER PLATE	2	COVER PLATE 19"W X 5 1/2"H
8	87T2P	1	SCHWEITZER ENG. LAB. TYPE SEL-487E; CAT. #0487E3X411XB0X4H624XXX	233	COVER PLATE	1	COVER PLATE 19"W X 7"H
10	WVAR/A/AD	1	MULTIFUNCTION AMP/DEMAND AMP/VOLT/WATT/VAR METER, BITRONICS TYPE M650, CAT# M650B3U511, 2, 2 1/2 OR 3-ELEMENT 0-5A AND 0-120VAC NOM. INPUT, UNIVERSAL PWR SUPPLY 55-240VAC/48-250VDC, THREE 5-DIGIT RED LED DISPLAYS, 4.5" SQUARE FACEPLATE, 6.5" DEEP BY 4" ROUND CASE, PORT 1: CONFIGURABLE RS-232/485 SERIAL, PORT 2: 10/100BASE-TX ETHERNET WITH MODBUS OR DNP3 OVER TCP/IP PROTOCOLS, VOLTAGE TO BE DISPLAYED IN PHASE TO PHASE PRIMARY UNITS.	234	COVER PLATE	1	COVER PLATE 19"W X 8 3/4"H
22	87T2S	1	SCHWEITZER ENG. LAB. TYPE SEL-387A; CAT. #0387A010HX4X341	238	COVER PLATE	1	COVER PLATE 19"W X 15 3/4"H
60	FT-19R	1	SWITCH BOX, ABB CORP., TYPE FT-19R, 3RU(LO) HEIGHT, SCREW TERMINALS, INCLUDES: POSITION A - 0 CURRENT (BLACK) AND 10 POTENTIAL (BLUE) HANDLE SWITCHES, POSITION B - 0 CURRENT (BLACK) AND 10 POTENTIAL (BLUE) HANDLE SWITCHES, POSITION C - COVER PLATE OVER FT-1 CUTOUT, FULL BLACK COVER, 8" EXTENDED DEPTH. STYLE #FRXG493493000AX08	*251	FB	11	FUSE BLOCK, 1 POLE, 600V, 30A, BUSSMAN, #BMM603-1SQ
61	FT-19R	1	SWITCH BOX, ABB CORP., TYPE FT-19R, 3RU(LO) HEIGHT, SCREW TERMINALS, INCLUDES: POSITION A - 0 CURRENT (BLACK) AND 10 POTENTIAL (BLUE) HANDLE SWITCHES, POSITION B - 0 CURRENT (BLACK) AND 10 POTENTIAL (BLUE) HANDLE SWITCHES, POSITION C - 6 CURRENT (BLACK) AND 4 POTENTIAL (RED) HANDLE SWITCHES, FULL BLACK COVER, 8" EXTENDED DEPTH. STYLE #FRXG493493137AX08	*252	FUSE	8	FUSE, COOPER BUSSMANN, 600V FAST-ACTING SUPPLEMENTAL, 5 AMP, CAT# KLM-5
75	FT-19R	1	SWITCH BOX, ABB CORP., TYPE FT-19R, 3RU(LO) HEIGHT, SCREW TERMINALS, INCLUDES: POSITION A - 8 CURRENT (BLACK) AND 2 POTENTIAL (RED) HANDLE SWITCHES, POSITION B - 8 CURRENT (BLACK) AND 2 POTENTIAL (RED) HANDLE SWITCHES, POSITION C - 6 CURRENT (BLACK) AND 4 POTENTIAL (RED) HANDLE SWITCHES, FULL BLACK COVER, 8" EXTENDED DEPTH. STYLE #FRXG084084137AX08	*253	TB	LOT	TERMINAL BLOCK, 4 POINT, MARATHON CO., CAT #1504SC
89	FT-19R	1	SWITCH BOX, ABB CORP., TYPE FT-19R, 3RU(LO) HEIGHT, SCREW TERMINALS, INCLUDES: POSITION A - 8 CURRENT (BLACK) AND 2 POTENTIAL (RED) HANDLE SWITCHES, POSITION B - 8 CURRENT (BLACK) AND 2 POTENTIAL (RED) HANDLE SWITCHES, POSITION C - COVER PLATE OVER FT-1 CUTOUT, FULL BLACK COVER, 8" EXTENDED DEPTH. STYLE #FRXG084084000AX08	*255	TB	LOT	TERMINAL BLOCK, 12 POINT, MARATHON CO., CAT #1512 STD
110	86T	2	LOCKOUT RELAY, ELECTROSWITCH, SERIES 24 LOR, CAT# 7810D, 125VDC "D" COIL, 10 DECK 20 N.O. & 20 N.C. CONTACTS, TITLE "LOCK-OUT RELAY", ENGRAVING CODE: 17C-2L22, OVAL-SHANK HANDLE				
118	63-CO	1	OFF-ON SWITCH, ELECTROSWITCH SERIES 24, CAT#24901D, DETENT ACTION ROTARY SWITCH, 2 POSITION, 1 DECK, 4 DOUBLE CONTACTS PER DECK, "NORMAL" AT 12:00, "OFF" AT 1:30, TITLE "CUT-OFF", ENGRAVING CODE:010D-2C16EZ, PISTOL GRIP HANDLE				
119	63OI	3	ANNUNCIATOR TARGET RELAY, ELECTROSWITCH ATR CAT#686-110A, WITHOUT SEAL IN OF AUXILIARY CONTACTS				
134	POWER STRIP	1	POWER STRIP, GEIST GLOBAL, MODEL# BRXN080-10, NON-SURGE, 15A				
189	TPI/TR2	1	INTELLIGENT CONTROL INC., PROGRAMMABLE TAP POSITION MONITOR, M#1250B-1-1 110VAC UNIT, -1 TO +1 MA ANALOG OUTPUT, LED DISPLAY, ISOLATED INPUT CARD, SEMI-FLUSH MOUNT, COMPATIBLE TO RECIEVE INPUT FROM SELSYN TRANSMITTER.				

NO	REVISION	ZONE	DATE	BY	CHK	ENG	NO	REVISION	ZONE	DATE	BY	CHK	ENG	REFERENCE DRAWINGS			DWN:	DATE:	CHK:	DATE:	PM:	DATE:	PROJ. NO:	APVD:	DATE:	SCALE: NONE	ENERGY SUPPLY ENGINEERING & CONSTRUCTION	UNIT 0 COLLECTOR SUBSTATION CONTROL 161KV/34.5KV PANEL 7S TR2 PRI AND SEC PROTECTION PANEL ELEVATION	NH-XXXXX-X	REV
														DWG NO.	MANUFACTURER	DESCRIPTION														
	REV. A - ISSUED FOR REVIEW: 8-9-21																													

**Xcel Energy**  
NORTHERN STATES POWER COMPANY  
XXXXXXX WIND FARM  
XXXXXXX COUNTY, MINNESOTA

THIS MAP/DRAWING IS A TOOL TO ASSIST EMPLOYEES IN THE PERFORMANCE OF THEIR JOBS. YOUR PERSONAL SAFETY IS PROVIDED FOR BY USING SAFETY PRACTICES, PROCEDURES, AND EQUIPMENT AS DESCRIBED IN THE SAFETY TRAINING PROGRAMS AND MANUALS.

ENERGY SUPPLY ENGINEERING & CONSTRUCTION



PANEL 8S  
34.5KV FEEDERS  
XXX311 & XXX312,  
BUS TIE RLY'G AND  
BUS TIE BKR CONTROL

SYMBOLS  
\* REAR MOUNTED EQUIPMENT.  
NAMEPLATES FOR DEVICE  
NAMEPLATE DENOTING CIRCUIT CAUTION

FRONT VIEW

ITEM	DEV	QUAN	DESCRIPTION
1	PANEL	1	90"H X 28"W (PANEL CONST DETAIL 3300.1-1)
7	51	3	SCHWEITZER ENG. LAB. TYPE SEL-351S; CAT. #0351S6XHD3J5421
23	87B1P	1	SCHWEITZER ENG. LAB. TYPE SEL-587Z; CAT. #0587Z0X325H12XX
56	FT-19R	2	SWITCH BOX, ABB CORP., TYPE FT-19R, 3RU(LO) HEIGHT, SCREW TERMINALS, INCLUDES: POSITION A - 6 CURRENT (BLACK) AND 4 POTENTIAL (RED) HANDLE SWITCHES, POSITION B - 0 CURRENT (BLACK) AND 10 POTENTIAL (BLUE) HANDLE SWITCHES, POSITION C - COVER PLATE OVER FT-1 CUTOUT, FULL BLACK COVER, 8" EXTENDED DEPTH. STYLE #FRXG137493000AX08
59	FT-19R	1	SWITCH BOX, ABB CORP., TYPE FT-19R, 3RU(LO) HEIGHT, SCREW TERMINALS, INCLUDES: POSITION A - 6 CURRENT (BLACK) AND 4 POTENTIAL (RED) HANDLE SWITCHES, POSITION B - 0 CURRENT (BLACK) AND 10 POTENTIAL (BLUE) HANDLE SWITCHES, POSITION C - 0 CURRENT (BLACK) AND 10 POTENTIAL (BLUE) HANDLE SWITCHES, FULL BLACK COVER, 8" EXTENDED DEPTH. STYLE #FRXG137493493AX08
110	86B	1	LOCKOUT RELAY, ELECTROSWITCH, SERIES 24 LOR, CAT# 7810D, 125VDC "D" COIL, 10 DECK 20 N.O. & 20 N.C. CONTACTS, TITLE "LOCK-OUT RELAY", ENGRAVING CODE: 17C-2L22, OVAL-SHANK HANDLE
134	POWER STRIP	1	POWER STRIP, GEIST GLOBAL, MODEL# BRXN080-10, NON-SURGE, 15A
232	COVER PLATE	1	COVER PLATE 19"W X 5 1/4"H
233	COVER PLATE	3	COVER PLATE 19"W X 7"H
237	COVER PLATE	1	COVER PLATE 19"W X 14"H
* 251	FB	14	FUSE BLOCK, 1 POLE, 600V, 30A, BUSSMAN, #BMM603-1SQ
* 252	FUSE	10	FUSE, COOPER BUSSMANN, 600V FAST-ACTING SUPPLEMENTAL, 5 AMP, CAT# KLM-5
* 253	TB	LOT	TERMINAL BLOCK, 4 POINT, MARATHON CO., CAT #1504SC
* 255	TB	LOT	TERMINAL BLOCK, 12 POINT, MARATHON CO., CAT #1512 STD
72	FT-19R	1	SWITCH BOX, ABB CORP., TYPE FT-19R, 3RU(LO) HEIGHT, SCREW TERMINALS, INCLUDES: POSITION A - 6 CURRENT (BLACK) AND 4 POTENTIAL (RED) HANDLE SWITCHES, POSITION B - 6 CURRENT (BLACK) AND 4 POTENTIAL (RED) HANDLE SWITCHES, POSITION C - 0 CURRENT (BLACK) AND 10 POTENTIAL (BLUE) HANDLE SWITCHES, FULL BLACK COVER, 8" EXTENDED DEPTH. STYLE #FRXG137137493AX08

NO	REVISION	ZONE	DATE	BY	CHK	ENG	NO
	REV. A - ISSUED FOR REVIEW: 8-9-21						

REVISION	ZONE	DATE	BY	CHK	ENG

REFERENCE DRAWINGS		
DWG NO.	MANUFACTURER	DESCRIPTION

**Xcel Energy**  
NORTHERN STATES POWER COMPANY  
XXXXXXX WIND FARM  
XXXXXXX COUNTY, MINNESOTA

DWN: DATE: CHK: DATE:  
ENG: DATE: CHK: DATE:  
PM: DATE: PROJ. NO:  
APVD: DATE: SCALE: NONE

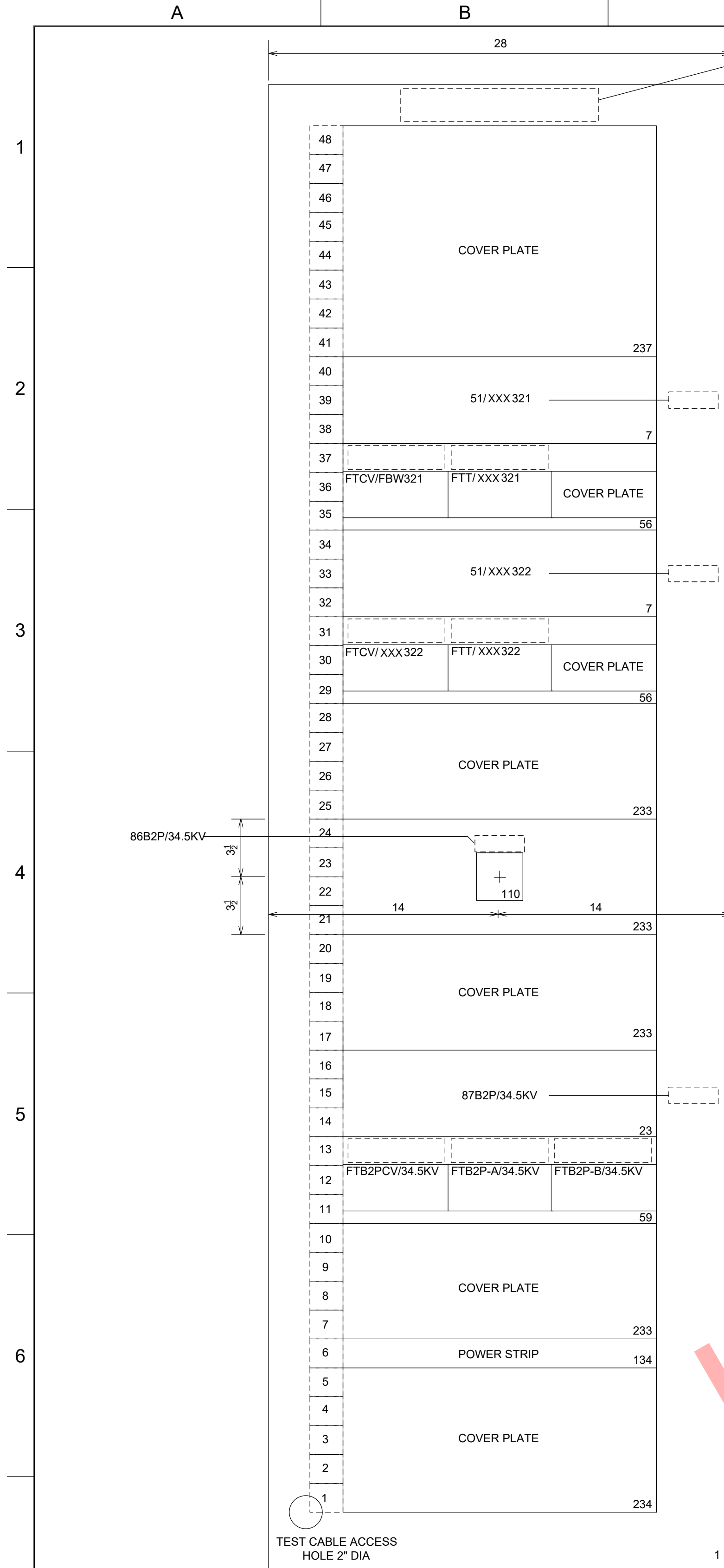
THIS MAP/DRAWING IS A TOOL TO ASSIST EMPLOYEES IN THE PERFORMANCE OF THEIR JOBS. YOUR PERSONAL SAFETY IS PROVIDED FOR BY USING SAFETY PRACTICES, PROCEDURES, AND EQUIPMENT AS DESCRIBED IN THE SAFETY TRAINING PROGRAMS AND MANUALS.

**ENERGY SUPPLY**  
ENGINEERING & CONSTRUCTION

**UNIT 0**  
COLLECTOR SUBSTATION CONTROL  
34.5KV PANEL 8S  
FEEDERS XXX311 & XXX312, BUS TIE CTRL AND RLY'G  
PANEL ELEVATION

NH-XXXXX-X





PANEL 9S  
34.5KV FEEDERS  
FBW321 & FBW322  
AND BUS 2 RLYG

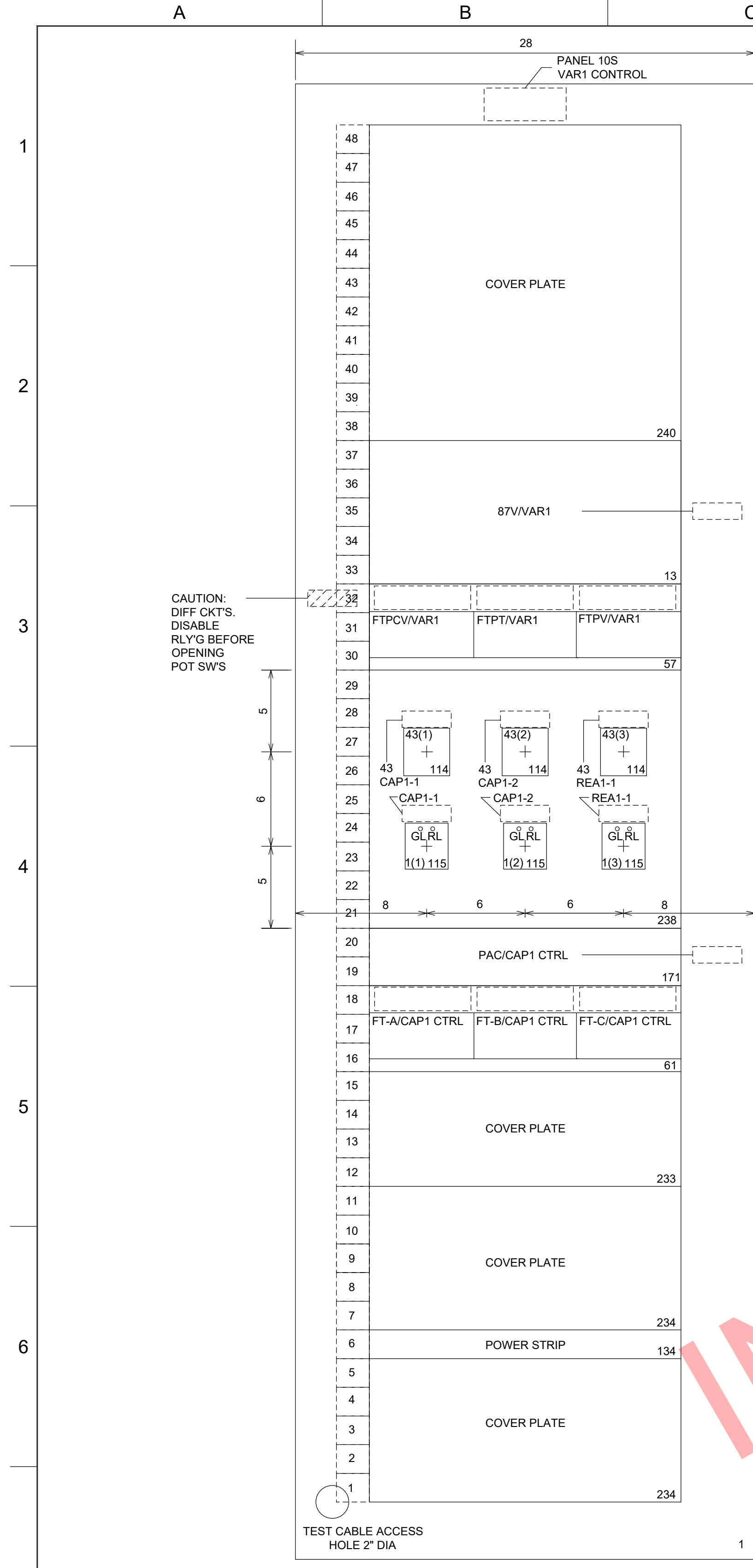
SYMBOLS  
 \* REAR MOUNTED EQUIPMENT.  
 NAMEPLATES FOR DEVICE  
 NAMEPLATE DENOTING CIRCUIT CAUTION

FRONT VIEW

ITEM	DEV	QUAN	DESCRIPTION	ITEM	DEV	QUAN	DESCRIPTION
1	PANEL	1	90"H X 28"W (PANEL CONST DETAIL 3300.1-1)				
7	51	2	SCHWEITZER ENG. LAB. TYPE SEL-351S; CAT. #0351S6XHD3J5421				
23	87B2P	1	SCHWEITZER ENG. LAB. TYPE SEL-587Z; CAT. #0587Z0X325H12XX				
56	FT-19R	2	SWITCH BOX, ABB CORP., TYPE FT-19R, 3RU(LO) HEIGHT, SCREW TERMINALS, INCLUDES: POSITION A - 6 CURRENT (BLACK) AND 4 POTENTIAL (RED) HANDLE SWITCHES, POSITION B - 0 CURRENT (BLACK) AND 10 POTENTIAL (BLUE) HANDLE SWITCHES, POSITION C - COVER PLATE OVER FT-1 CUTOUT, FULL BLACK COVER, 8" EXTENDED DEPTH. STYLE #FRXG137493000AX08				
59	FT-19R	1	SWITCH BOX, ABB CORP., TYPE FT-19R, 3RU(LO) HEIGHT, SCREW TERMINALS, INCLUDES: POSITION A - 6 CURRENT (BLACK) AND 4 POTENTIAL (RED) HANDLE SWITCHES, POSITION B - 0 CURRENT (BLACK) AND 10 POTENTIAL (BLUE) HANDLE SWITCHES, POSITION C - 0 CURRENT (BLACK) AND 10 POTENTIAL (BLUE) HANDLE SWITCHES, FULL BLACK COVER, 8" EXTENDED DEPTH. STYLE #FRXG137493493AX08				
110	86B	1	LOCKOUT RELAY, ELECTROSWITCH, SERIES 24 LOR, CAT# 7810D, 125VDC "D" COIL, 10 DECK 20 N.O. & 20 N.C. CONTACTS, TITLE "LOCK-OUT RELAY", ENGRAVING CODE: 17C-2L22, OVAL-SHANK HANDLE				
134	POWER STRIP	1	POWER STRIP, GEIST GLOBAL, MODEL# BRXN080-10, NON-SURGE, 15A				
233	COVER PLATE	4	COVER PLATE 19"W X 7"H				
234	COVER PLATE	1	COVER PLATE 19"W X 8 3/4"H				
237	COVER PLATE	1	COVER PLATE 19"W X 14"H				
*251	FB	8	FUSE BLOCK, 1 POLE, 250V, 30A, BUSSMAN, #BMM603-1SQ				
*252	FUSE	6	FUSE, COOPER BUSSMANN, 600V FAST-ACTING SUPPLEMENTAL, 5 AMP, CAT# KLM-5				
*253	TB	LOT	TERMINAL BLOCK, 4 POINT, MARATHON CO., CAT #1504SC				
*255	TB	LOT	TERMINAL BLOCK, 12 POINT, MARATHON CO., CAT #1512 STD				

INDICATIVE DRAWING

NO		REVISION		ZONE	DATE	BY	CHK	ENG	NO	REVISION		ZONE	DATE	BY	CHK	ENG	REFERENCE DRAWINGS			 NORTHERN STATES POWER COMPANY XXXXXXX WIND FARM XXXXXXX COUNTY, MINNESOTA	THIS MAP/DRAWING IS A TOOL TO ASSIST EMPLOYEES IN THE PERFORMANCE OF THEIR JOBS. YOUR PERSONAL SAFETY IS PROVIDED FOR BY USING SAFETY PRACTICES, PROCEDURES, AND EQUIPMENT AS DESCRIBED IN THE SAFETY TRAINING PROGRAMS AND MANUALS.	UNIT 0		REV
NO		REVISION		ZONE	DATE	BY	CHK	ENG	NO	REVISION		ZONE	DATE	BY	CHK	ENG	DWG NO.	MANUFACTURER	DESCRIPTION			COLLECTOR SUBSTATION CONTROL		
NO		REVISION		ZONE	DATE	BY	CHK	ENG	NO	REVISION		ZONE	DATE	BY	CHK	ENG	DWG NO.	MANUFACTURER	DESCRIPTION			34.5KV PANEL 9S		
		REV. A - ISSUED FOR REVIEW: 8-9-21																		FEEDERS XXX321 & XXX322 CTRL AND RLY'G				
																				PANEL ELEVATION				
																				NH-XXXXX-X				
																				ENERGY SUPPLY ENGINEERING & CONSTRUCTION				
																				SCALE: NONE				



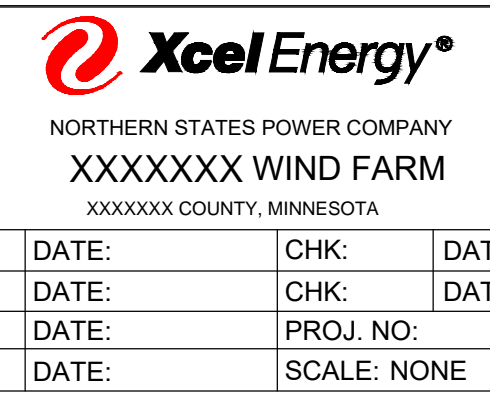
FRONT VIEW

- SYMBOLS
- INSTRUCTION LEAFLETS TO BE FURNISHED BY PANEL FABRICATOR.
  - REAR MOUNTED EQUIPMENT.
  - NAMEPLATES FOR DEVICE
  - NAMEPLATE DENOTING CIRCUIT CAUTION

ITEM	DEV	QUAN	DESCRIPTION	ITEM	DEV	QUAN	DESCRIPTION
1	PANEL	1	90"H X 28"W (PANEL CONST DETAIL 3300.1-1)				
13	87V	1	SCHWEITZER ENG. LAB. TYPE SEL-487V; CAT. #0487V1X4151XB0X4H5B424X				
57	FT-19R	1	SWITCH BOX, ABB CORP., TYPE FT-19R, 3RU(LO) HEIGHT, SCREW TERMINALS, INCLUDES: POSITION A - 6 CURRENT (BLACK) AND 4 POTENTIAL (RED) HANDLE SWITCHES, POSITION B - 0 CURRENT (BLACK) AND 10 POTENTIAL (BLUE) HANDLE SWITCHES, POSITION C - 0 CURRENT (BLACK) AND 10 POTENTIAL (RED) HANDLE SWITCHES, FULL BLACK COVER, 8" EXTENDED DEPTH. STYLE #FRXG137493036AX08				
61	FT-19R	1	SWITCH BOX, ABB CORP., TYPE FT-19R, 3RU(LO) HEIGHT, SCREW TERMINALS, INCLUDES: POSITION A - 0 CURRENT (BLACK) AND 10 POTENTIAL (BLUE) HANDLE SWITCHES, POSITION B - 0 CURRENT (BLACK) AND 10 POTENTIAL (BLUE) HANDLE SWITCHES, POSITION C - 0 CURRENT (BLACK) AND 10 POTENTIAL (BLUE) HANDLE SWITCHES, FULL BLACK COVER, 8" EXTENDED DEPTH. STYLE #FRXG493493493AX08				
114	43	3	AUTO-MANUAL TRANSFER SWITCH, ELECTROSWITCH SERIES 24, CAT# 24902D DETENT ACTION ROTARY SWITCH, 2 POSITION, 2 DECK, 4 DOUBLE CONTACTS PER DECK, "AUTO" AT 12:00, "MAN" AT 1:30, TITLE "AUTO-MANUAL", ENGRAVING CODE: 010D-2A21K, PISTOL GRIP HANDLE				
115	1	3	CONTROL SWITCH, ELECTROSWITCH SERIES 24, CAT# 74PB202QS, BREAKER CONTROL SWITCH, 2 POSITION, 2 DECK, ELECTRICALLY SEPERATED CONTACTS, "TRIP" AT 11:00, "CLOSE" AT 1:00, TITLE "CONTROL", OVAL-SHANK HANDLE, LIGHTED NAMEPLATE LEDS: RED(RIGHT) GREEN(LEFT)				
134	POWER STRIP	1	POWER STRIP, GEIST GLOBAL, MODEL# BRXN080-10, NON-SURGE, 15A				
171	PAC	1	SCHWEITZER ENGINEERING LAB. TYPE SEL-2440, CAT #24402H11A6X11630.				
233	COVER PLATE	1	COVER PLATE 19"W X 7"H				
234	COVER PLATE	2	COVER PLATE 19"W X 8 3/4"H				
238	COVER PLATE	1	COVER PLATE 19"W X 15 3/4"H				
240	COVER PLATE	1	COVER PLATE 19"W X 19 1/2"H				
*251	FB	13	FUSE BLOCK, 1 POLE, 600V, 30A, BUSSMAN, #BMM603-1SQ				
*252	FUSE	8	FUSE, COOPER BUSSMANN, 600V FAST-ACTING SUPPLEMENTAL, 5 AMP, CAT# KLM-5				
*253	TB	LOT	TERMINAL BLOCK, 4 POINT, MARATHON CO., CAT #1504SC				
*255	TB	LOT	TERMINAL BLOCK, 12 POINT, MARATHON CO., CAT #1512 STD				

INDICATIVE DRAWING

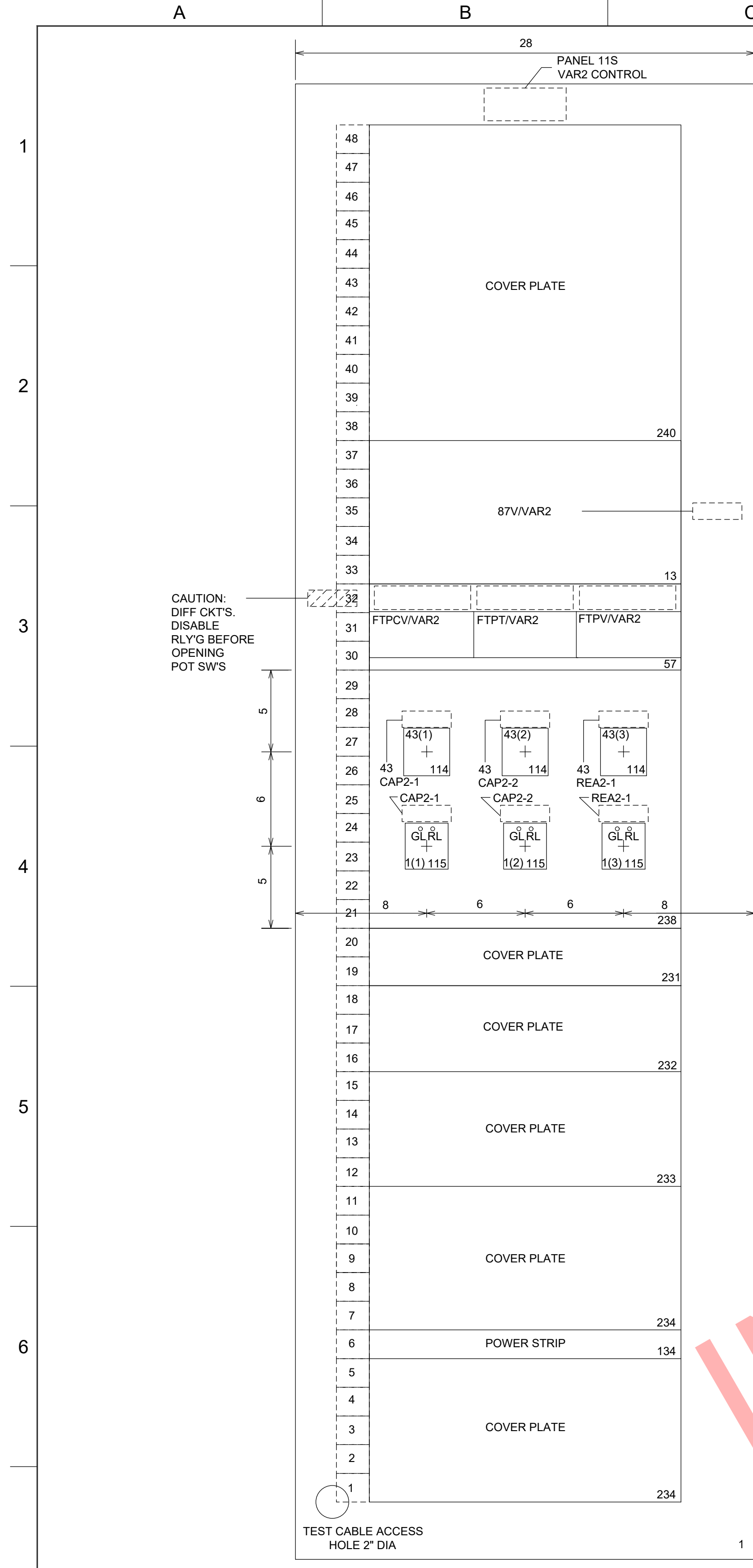
NO	REVISION	ZONE	DATE	BY	CHK	ENG	NO	REVISION	ZONE	DATE	BY	CHK	ENG	REFERENCE DRAWINGS			DWN:	DATE:	CHK:	DATE:	PM:	DATE:	PROJ. NO:	APVD:	DATE:	SCALE: NONE	ENERGY SUPPLY ENGINEERING & CONSTRUCTION	UNIT 0 COLLECTOR SUBSTATION CONTROL 34.5KV PANEL 10S VAR1 CTRL & RLY'G PANEL ELEVATION	NH-XXXXX-X	REV
														DWG NO.	MANUFACTURER	DESCRIPTION														
	REV. A - ISSUED FOR REVIEW: 8-9-21																													



THIS MAP/DRAWING IS A TOOL TO ASSIST EMPLOYEES IN THE PERFORMANCE OF THEIR JOBS. YOUR PERSONAL SAFETY IS PROVIDED FOR BY USING SAFETY PRACTICES, PROCEDURES, AND EQUIPMENT AS DESCRIBED IN THE SAFETY TRAINING PROGRAMS AND MANUALS.

UNIT 0  
COLLECTOR SUBSTATION CONTROL  
34.5KV PANEL 10S  
VAR1 CTRL & RLY'G  
PANEL ELEVATION

NH-XXXXX-X



FRONT VIEW

- SYMBOLS
- INSTRUCTION LEAFLETS TO BE FURNISHED BY PANEL FABRICATOR.
  - REAR MOUNTED EQUIPMENT.
  - NAMEPLATES FOR DEVICE
  - NAMEPLATE DENOTING CIRCUIT CAUTION

ITEM	DEV	QUAN	DESCRIPTION	ITEM	DEV	QUAN	DESCRIPTION
1	PANEL	1	90"H X 28"W (PANEL CONST DETAIL 3300.1-1)				
13	87V	1	SCHWEITZER ENG. LAB. TYPE SEL-487V; CAT. #0487V1X4151XB0X4H5B424X				
57	FT-19R	1	SWITCH BOX, ABB CORP., TYPE FT-19R, 3RU(LO) HEIGHT, SCREW TERMINALS, INCLUDES: POSITION A - 6 CURRENT (BLACK) AND 4 POTENTIAL (RED) HANDLE SWITCHES, POSITION B - 0 CURRENT (BLACK) AND 10 POTENTIAL (BLUE) HANDLE SWITCHES, POSITION C - 0 CURRENT (BLACK) AND 10 POTENTIAL (RED) HANDLE SWITCHES, FULL BLACK COVER, 8" EXTENDED DEPTH. STYLE #FRXG137493036AX08				
114	43	3	AUTO-MANUAL TRANSFER SWITCH, ELECTROSWITCH SERIES 24, CAT# 24902D DETENT ACTION ROTARY SWITCH, 2 POSITION, 2 DECK, 4 DOUBLE CONTACTS PER DECK, "AUTO" AT 12:00, "MAN" AT 1:30, TITLE "AUTO-MANUAL", ENGRAVING CODE: 010D-2A21K, PISTOL GRIP HANDLE				
115	1	3	CONTROL SWITCH, ELECTROSWITCH SERIES 24, CAT# 74PB202QS, BREAKER CONTROL SWITCH, 2 POSITION, 2 DECK, ELECTRICALLY SEPERATED CONTACTS, "TRIP" AT 11:00, "CLOSE" AT 1:00, TITLE "CONTROL", OVAL-SHANK HANDLE, LIGHTED NAMEPLATE LEDS: RED(RIGHT) GREEN(LEFT)				
134	POWER STRIP	1	POWER STRIP, GEIST GLOBAL, MODEL# BRXN080-10, NON-SURGE, 15A				
231	COVER PLATE	1	COVER PLATE 19"W X 3 1/2"H				
232	COVER PLATE	1	COVER PLATE 19"W X 5 1/2"H				
233	COVER PLATE	1	COVER PLATE 19"W X 7"H				
234	COVER PLATE	2	COVER PLATE 19"W X 8 3/4"H				
238	COVER PLATE	1	COVER PLATE 19"W X 15 3/4"H				
240	COVER PLATE	1	COVER PLATE 19"W X 19 1/4"H				
*251	FB	10	FUSE BLOCK, 1 POLE, 600V, 30A, BUSSMAN, #BMM603-1SQ				
*252	FUSE	6	FUSE, COOPER BUSSMANN, 600V FAST-ACTING SUPPLEMENTAL, 5 AMP, CAT# KLM-5				
*253	TB	LOT	TERMINAL BLOCK, 4 POINT, MARATHON CO., CAT #1504SC				
*255	TB	LOT	TERMINAL BLOCK, 12 POINT, MARATHON CO., CAT #1512 STD				

INDICATIVE DRAWING

NO	REVISION	ZONE	DATE	BY	CHK	ENG	NO
	REV. A - ISSUED FOR REVIEW: 8-9-21						

REVISION	ZONE	DATE	BY	CHK	ENG

REFERENCE DRAWINGS		
DWG NO.	MANUFACTURER	DESCRIPTION

**XcelEnergy**  
NORTHERN STATES POWER COMPANY  
XXXXXXX WIND FARM  
XXXXXXX COUNTY, MINNESOTA

DWN:	DATE:	CHK:	DATE:
ENG:	DATE:	CHK:	DATE:
PM:	DATE:	PROJ. NO:	
APVD:	DATE:	SCALE: NONE	

THIS MAP/DRAWING IS A TOOL TO ASSIST EMPLOYEES IN THE PERFORMANCE OF THEIR JOBS. YOUR PERSONAL SAFETY IS PROVIDED FOR BY USING SAFETY PRACTICES, PROCEDURES, AND EQUIPMENT AS DESCRIBED IN THE SAFETY TRAINING PROGRAMS AND MANUALS.

**ENERGY SUPPLY**  
ENGINEERING & CONSTRUCTION

**UNIT 0**  
COLLECTOR SUBSTATION CONTROL  
34.5KV PANEL 11S  
VAR2 CTRL & RLY'G  
PANEL ELEVATION

NH-XXXXX-X

